



More information, scan

TAOTAO GROUP CO.,LTD

ADD: XINBI HARDWARE XINTI TOWN JINYUN COUNTY ZHEJIANG,CHINA

TEL: 0086-578-3185851

FAX: 0086-578-3185853

E-MAIL: sales01@taotaogroup.com

HTTP: //www.taotaomotor.com www.taotaomotor.en.alibaba.com

9662 品牌设计 / 1375896512



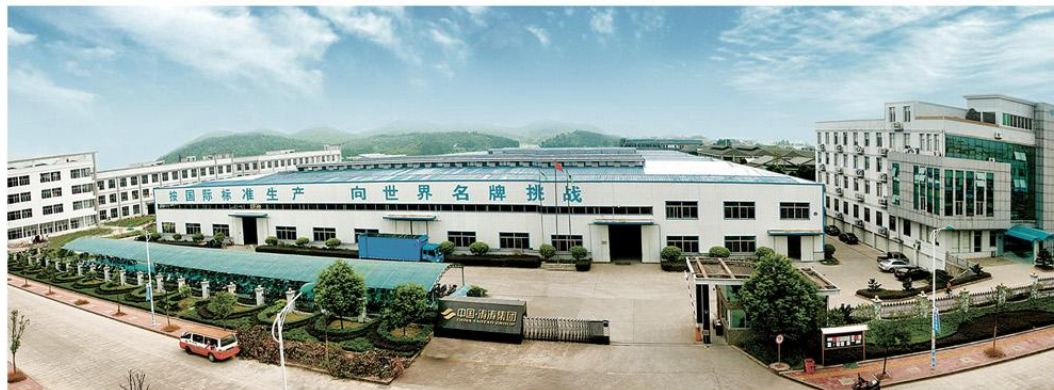
TAOTAO MOTOR

WHEEL THE WORLD

OUT DOOR SPORT SERIES

- ATV ■
- UTV ■
- BUGGY ■
- DIRTBIKE ■
- SNOWMOBILE ■





Company Profile

Taotao Group Co., Ltd. was founded in 1985, located in Jinyun County, Zhejiang Province, is near to the Jinhua-Lishui-Wenzhou Expressway and is adjacent to China Hardware City - Yongkang. Taotao Group has been a comprehensive large group enterprise integrates R&D, production and sale, covering an area of 20,000 square meters. We have 2,000 employees and over 200 staff members with intermediate & senior technical titles. Our group has six subsidiary corporations, including Jinyun County Xiang Yuan Industrial Co., Ltd., Jinyun County Taotao Leisure Articles Co., Ltd., Jinyun Tianhui Import & Export Co., Ltd., Jinyun County Taotao Garden Tools Co., Ltd. and Zhejiang Voyage Motorcycle Co., Ltd. which are engaged in industry, real estate, hotels and financial investment. Our main products are ATVs, motorcycles, electric vehicles, electric bicycles, wooden doors, steel doors, running machines, fitness equipment and garden tools. All of our products have gained good value and wide permission from national and overseas markets for years.

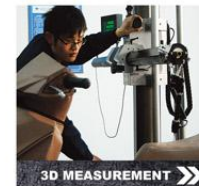
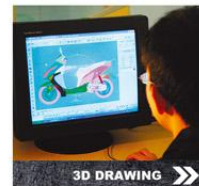
R&D Capability Taotao Group has a great R&D department which covers more than 400 square meters, and owns more than 200 staff members with senior & intermediate technical titles. We are ready to provide you with OEM and ODM services. With our joint effort, Taotao products have been CE, EEC, UL, EPA, CARB and ISO9001:2000 Quality Management System certified. Taotao always develops 5-10 new products every year to meet different requirements from different markets.

Large Output Taotao Group is the first grade production enterprise in China's motorcycle, electric vehicle and engine field, and is the first corporation of China and the third corporation of world in aspect of attaining CPSC certificate from America. Our group has 4 casting shops, 4 welding shops, 2 mould shops, 1 injection shop, 1 hub-making shop and 1 heat-coping shop, and 16 production assembly lines for all different products, 4 plastic-spraying lines and 4 paint-coating lines. Our group has invested over 10 million RMB in establishing a testing center for motorcycles, electric vehicles and related spare parts, more than 0.1 billion RMB for production equipment and over 20 million RMB for testing equipment or instruments. The first-class production facilities, advanced testing equipment and skilled workers allow Taotao to produce 300,000 motorcycles, 300,000 engines, 300,000 ATVs, 300,000 electric vehicles, 100,000 running machines, 500,000 fitness equipment, 300,000 steel & wooden doors and 2 million saw chains every year.

Export Markets Taotao Group has 9 wholly owned companies in the United States, Canada, Russia and Dubai. Annual sales volume is more than 80 million US dollars. Taotao products have been exported to the USA, Canada, Europe, South America, the Middle East and Southeast Asia.



WHEEL THE WORLD



FREELANDER
WITH HEART GO ON TRAVEL



ATA300-F POSSIBLE IN ANYWHERE

■ red ■ blue

What can you do with a Freelanders? What do you want to do?

This model features durability and reliability design which is ideal for hunting, agricultural tasks or leisure moments.

When the weekend is all yours, you can go with freelanders climb the mountain, cross the Forest, Desert, fish, hunting and so on. It can help you go anywhere, just enjoy your time.

Specification

ENGINE

Type: 276cc, Water cooled, 4-stroke, 1-cylinder
Bore×Stroke: $\phi 72.5 \times 66.8$ mm
Compression Ratio: 10.0:1
Carburetor: CVK052
Ignition: CDI
Starting: Electrical start
Transmission: L-H-N-R-P
Drive Train: Shaft drive
Max. Power: 13.8kW/7000r/min
Max. Torque: 25.3N.m/6500r/min

CHASSIS

Suspension/Front: Independent double swing arm
Suspension/Rear: Independent double swing arm
Brakes/Front: Hydraulic disc
Brakes/Rear: Hydraulic disc
Tires/Front: 25x8-12 radial
Tires/Rear: 25x10-12 radial

DIMENSIONS

DIMENSIONS

Overall Size (L×W×H) 2160*1210*1250mm
Seat Height: 950mm
Wheelbase: 1295mm
Ground Clearance: 200mm
Battery: 12V14Ah
Fuel Capacity: 12.5L
Dry Weight: 320kg
Max. Load: 150kg
Package Size: 2280×1300×870mm
Loading Quantity: 8pcs/20' GP, 27pcs/40' HQ

MAIN PERFORMANCE

Max. Speed: 75km/h
Fuel Consumption: 6.0L/100km
Starting Time: ≤15s
Brake Distance: 30km/h≤7m



ATV
series

www.taotao-motor.com

WHEEL THE WORLD

■ ATA110-F



■ Sky blue



■ Pink



■ The desert

Specification

ENGINE

Type: 107cc, Air cooled, 4-stroke, 1-cylinder
Bore×Stroke: $\phi 52.4 \times 49.5$ mm
Compression Ratio: 9.2:1
Carburetor: PZ20
Ignition: CDI
Starting: Electrical start
Transmission: Automatic
Drive Train: Chain drive
Max. Power: 4.5kW/8000r/min
Max. Torque: 6.9N.m/6500r/min

CHASSIS

Suspension/Front: Independent double swing arm
Suspension/Rear: Single swing arm
Brakes/Front: Drum
Brakes/Rear: Ventilated Hydraulic disc
Tires/Front: 16×8-7 radial
Tires/Rear: 16×8-7 radial

DIMENSIONS

Overall Size (L×W×H) 1320×760×980mm
Seat Height: 640mm
Wheelbase: 800mm
Ground Clearance: 70mm
Battery: 12V4Ah
Fuel Capacity: 2.3L
Dry Weight: 92kg
Max. Load: 85kg
Package Size: 1225×760×590mm
Loading Quantity: 52pcs/20' GP, 112pcs/40' HQ

MAIN PERFORMANCE

Max. Speed: 50km/h
Fuel Consumption: 2.5L/100km
Starting Time: ≤15s
Brake Distance: 30km/h≤5.9m

Specification

ENGINE

Type: 107cc, Air cooled, 4-stroke, 1-cylinder
Bore×Stroke: $\phi 52.4 \times 49.5$ mm
Compression Ratio: 9.2:1
Carburetor: PZ20
Ignition: CDI
Starting: Electrical start
Transmission: Automatic
Drive Train: Chain drive
Max. Power: 4.5kW/8000r/min
Max. Torque: 6.9N.m/6500r/min

CHASSIS

Suspension/Front: Independent double swing arm
Suspension/Rear: Single swing arm
Brakes/Front: Drum
Brakes/Rear: Ventilated Hydraulic disc
Tires/Front: 16×8-7 radial
Tires/Rear: 16×8-7 radial

DIMENSIONS

Overall Size (L×W×H) 1320×760×980mm
Seat Height: 640mm
Wheelbase: 800mm
Ground Clearance: 70mm
Battery: 12V4Ah
Fuel Capacity: 3.5L
Dry Weight: 90kg
Max. Load: 85kg
Package Size: 1160×790×650mm
Loading Quantity: 42pcs/20' GP, 120pcs/40' HQ

MAIN PERFORMANCE

Max. Speed: 50km/h
Fuel Consumption: 2.5L/100km
Starting Time: ≤15s
Brake Distance: 30km/h≤5.9m

■ ATA110-M



■ Camouflage



ATV
series

www.taotao-motor.com

WHEEL THE WORLD

■ ATA110-B



■ Black, spider lines



■ Red, spider lines



■ Red



■ Blue

■ Black

Specification

ENGINE

Type: 107cc, Air cooled, 4-stroke, 1-cylinder
Bore×Stroke: $\phi 52.4 \times 49.5$ mm
Compression Ratio: 9.2:1
Carburetor: PZ20
Ignition: CDI
Starting: Electrical start
Transmission: Automatic
Drive Train: Chain drive
Max. Power: 4.5kW/6000r/min
Max. Torque: 6.9N.m/6500r/min

CHASSIS

Suspension/Front: Independent double swing arm
Suspension/Rear: Single swing arm
Brakes/Front: Drum
Brakes/Rear: Ventilated Hydraulic disc
Tires/Front: 14.5×7-6 radial
Tires/Rear: 14.5×7-6 radial

DIMENSIONS

Overall Size (L×W×H) 1220×730×855mm
Seat Height: 600mm
Wheelbase: 785mm
Ground Clearance: 70mm
Battery: 12V4Ah
Fuel Capacity: 3.5L
Dry Weight: 73kg
Max. Load: 85kg
Package Size: 1140×680×590mm
Loading Quantity: 64pcs/20' GP, 136pcs/40' HQ

MAIN PERFORMANCE

Max. Speed: 50km/h
Fuel Consumption: 2.5L/100km
Starting Time: ≤15s
Brake Distance: 30km/h≤5.9m

Specification

ENGINE

Type: 124cc, Air cooled, 4-stroke, 1-cylinder
Bore×Stroke: $\phi 53.2 \times 49.5$ mm
Compression Ratio: 9.5:1
Carburetor: PZ20
Ignition: CDI
Starting: Electrical start
Transmission: 3-2-1-N-R
Drive Train: Chain drive
Max. Power: 5.0kW/6000r/min
Max. Torque: 7.0N.m/6500r/min

CHASSIS

Suspension/Front: Independent double swing arm
Suspension/Rear: Single swing arm
Brakes/Front: Drum
Brakes/Rear: Ventilated Hydraulic disc
Tires/Front: 21X7-8 radial
Tires/Rear: 20X9.5-8 radial

DIMENSIONS

Overall Size (L×W×H) 1580×985×1120mm
Seat Height: 640mm
Wheelbase: 1080mm
Ground Clearance: 110mm
Battery: 12V9Ah
Fuel Capacity: 3.5L
Dry Weight: 132.5kg
Max. Load: 90kg
Package Size: 1520×810×820mm
Loading Quantity: 21pcs/20' GP, 64pcs/40' HQ

MAIN PERFORMANCE

Max. Speed: 55km/h
Fuel Consumption: 3.0L/100km
Starting Time: ≤15s
Brake Distance: 30km/h≤7m

■ ATA125-F



■ Marble ■ Pink



■ Camouflage



■ Red ■ Black



ATV
series

www.taotao-motor.com

WHEEL THE WORLD

■ ATA125-G



■ Yellow



■ Black



■ Red



■ Blue



■ Green

Specification

ENGINE

Type: 124cc, Air cooled, 4-stroke, 1-cylinder
Bore×Stroke: $\phi 53.2 \times 49.5$ mm
Compression Ratio: 9.5:1
Carburetor: PZ20
Ignition: CDI
Starting: Electrical start
Transmission: 3-2-1-N-R
Drive Train: Chain drive
Max. Power: 5.0kW/6000r/min
Max. Torque: 7.0N.m/6500r/min

CHASSIS

Suspension/Front: Independent double swing arm
Suspension/Rear: Single swing arm
Brakes/Front: Drum
Brakes/Rear: Ventilated Hydraulic disc
Tires/Front: 17X7-8 radial
Tires/Rear: 18X9.5-8 radial

DIMENSIONS

Overall Size (L×W×H) 1460*1000*920mm
Seat Height: 650mm
Wheelbase: 1050mm
Ground Clearance: 120mm
Battery: 12V9Ah
Fuel Capacity: 3.5L
Dry Weight: 90kg
Max. Load: 90kg
Package Size: 1310×760×610mm
Loading Quantity: 48pcs/20' GP, 108pcs/40' HQ

MAIN PERFORMANCE

Max. Speed: 55km/h
Fuel Consumption: 3.0L/100km
Starting Time: ≤15s
Brake Distance: 30km/hs7m

Specification

ENGINE

Type: 149cc, Air cooled, 4-stroke, 1-cylinder
Bore×Stroke: $\phi 57.4 \times 57.8$ mm
Compression Ratio: 9.5:1
Carburetor: PZ26
Ignition: CDI
Starting: Electrical start
Transmission: F-N-R
Drive Train: Chain drive
Max. Power: 6.3kW/7500r/min
Max. Torque: 9.0N.m/5500r/min

CHASSIS

Suspension/Front: Independent double swing arm
Suspension/Rear: Single swing arm
Brakes/Front: Drum
Brakes/Rear: Ventilated Hydraulic disc
Tires/Front: 21X7-8 radial
Tires/Rear: 20X9.5-8 radial

DIMENSIONS

Overall Size (L×W×H) 1650*1120*1160mm
Seat Height: 750mm
Wheelbase: 1180mm
Ground Clearance: 120mm
Battery: 12V9Ah
Fuel Capacity: 3.5L
Dry Weight: 140kg
Max. Load: 130kg
Package Size: 1480×840×820mm
Loading Quantity: 27pcs/20' GP, 66pcs/40' HQ

MAIN PERFORMANCE

Max. Speed: 60km/h
Fuel Consumption: 3.3L/100km
Starting Time: ≤15s
Brake Distance: 30km/hs7m

■ ATA150-G



■ Red



WHEEL THE WORLD

■ ATA110-D



■ Red, spider lines



■ Black



■ Pink



■ Camouflage



■ Red marble
■ Yellow marble

Specification

ENGINE

Type: 107cc, Air cooled, 4-stroke, 1-cylinder
Bore×Stroke: $\phi 52.4 \times 49.5$ mm
Compression Ratio: 9.2:1
Carburetor: PZ20
Ignition: CDI
Starting: Electrical start
Transmission: Automatic
Drive Train: Chain drive
Max. Power: 4.5kW/6000r/min
Max. Torque: 6.9N.m/6500r/min

CHASSIS

Suspension/Front: Independent double swing arm
Suspension/Rear: Single swing arm
Brakes/Front: Drum
Brakes/Rear: Ventilated Hydraulic disc
Tires/Front: 16×8-7 radial
Tires/Rear: 16×8-7 radial

DIMENSIONS

Overall Size (L×W×H): 1320×760×980mm
Seat Height: 640mm
Wheelbase: 800mm
Ground Clearance: 70mm
Battery: 12V4Ah
Fuel Capacity: 3.5L
Dry Weight: 92kg
Max. Load: 85kg
Package Size: 1220×760×600mm
Loading Quantity: 39pcs/20' GP, 112pcs/40' HQ

MAIN PERFORMANCE

Max. Speed: 50km/h
Fuel Consumption: 2.5L/100km
Starting Time: ≤15s
Brake Distance: 30km/h≤5.9m

Specification

ENGINE

Type: 124cc, Air cooled, 4-stroke, 1-cylinder
Bore×Stroke: $\phi 53.2 \times 49.5$ mm
Compression Ratio: 9.5:1
Carburetor: PZ20
Ignition: CDI
Starting: Electrical start
Transmission: F-N-R
Drive Train: Chain drive
Max. Power: 5.0kW/8000r/min
Max. Torque: 7.0N.m/6500r/min

CHASSIS

Suspension/Front: Independent double swing arm
Suspension/Rear: Single swing arm
Brakes/Front: Drum
Brakes/Rear: Ventilated Hydraulic disc
Tires/Front: 19"7-8 radial
Tires/Rear: 18"9.5-8 radial

DIMENSIONS

Overall Size (L×W×H): 1320×900×940mm
Seat Height: 680mm
Wheelbase: 880mm
Ground Clearance: 100mm
Battery: 12V4Ah
Fuel Capacity: 3.5L
Dry Weight: 94kg
Max. Load: 90kg
Package Size: 1300×770×620mm
Loading Quantity: 36pcs/20' GP, 108pcs/40' HQ

MAIN PERFORMANCE

Max. Speed: 55km/h
Fuel Consumption: 3.0L/100km
Starting Time: ≤15s
Brake Distance: 30km/h≤7m

■ ATA125-D



■ Camouflage



■ Mei red



■ Red



■ Blue



WHEEL THE WORLD

■ ATA150-D



■ Camouflage



■ Red



■ Blue

Specification

ENGINE

Type: 149cc, Air cooled, 4-stroke, 1-cylinder
Bore×Stroke: $\phi 57.4 \times 57.8$ mm
Compression Ratio: 9.5:1
Carburetor: PZ26
Ignition: CDI
Starting: Electrical start
Transmission: F-N-R
Drive Train: Chain drive
Max. Power: 6.3kW/7500r/min
Max. Torque: 9.0N.m/5500r/min

CHASSIS

Suspension/Front: Independent double swing arm
Suspension/Rear: Single swing arm
Brakes/Front: Drum
Brakes/Rear: Ventilated Hydraulic disc
Tires/Front: 23X7-10 radial
Tires/Rear: 22X10-10 radial

DIMENSIONS

Overall Size (L*W*H) 1820*1190*1170mm
Seat Height: 880mm
Wheelbase: 1190mm
Ground Clearance: 120mm
Battery: 12V9Ah
Fuel Capacity: 5L
Dry Weight: 150kg
Max. Load: 130kg
Package Size: 1580*905*800mm
Loading Quantity: 14pcs/20' GP, 45pcs/40' HQ

MAIN PERFORMANCE

Max. Speed: 60km/h
Fuel Consumption: 3.3L/100km
Starting Time: ≤ 15 s
Brake Distance: 30km/h ≤ 7 m

Specification

ENGINE

Type: 175cc, Air cooled, 4-stroke, 1-cylinder
Bore×Stroke: $\phi 61 \times 57.8$ mm
Compression Ratio: 9.2:1
Carburetor: PZ24J
Ignition: CDI
Starting: Electrical start
Transmission: F-N-R
Drive Train: Chain drive
Max. Power: 8.0kW/8500r/min
Max. Torque: 11.0N.m/5500r/min

CHASSIS

Suspension/Front: Independent double swing arm
Suspension/Rear: Single swing arm
Brakes/Front: Drum
Brakes/Rear: Ventilated Hydraulic disc
Tires/Front: 21X7-8 radial
Tires/Rear: 20X9-5-8 radial

DIMENSIONS

Overall Size (L*W*H) 1700*1040*1110mm
Seat Height: 810mm
Wheelbase: 1120mm
Ground Clearance: 120mm
Battery: 12V9Ah
Fuel Capacity: 5L
Dry Weight: 170kg
Max. Load: 150kg
Package Size: 1580*900*800mm
Loading Quantity: 21pcs/20' GP, 42pcs/40' HQ

MAIN PERFORMANCE

Max. Speed: 72km/h
Fuel Consumption: 3.8L/100km
Starting Time: ≤ 15 s
Brake Distance: 30km/h ≤ 7 m

■ ATA200-D



■ Blue ■ Red



WHEEL THE WORLD

■ ATA250-D



■ Red



Specification

ENGINE

Type: 197cc, Air cooled, 4-stroke, 1-cylinder
Bore×Stroke: 68×63mm
Compression Ratio: 9.5:1
Carburetor: PZ27
Ignition: CDI
Starting: Electrical start
Transmission: 4-3-2-1-N-R
Drive Train: Chain drive
Max. Power: 10.5kw/7500r/min
Max. Torque: 15.0N.m/5500r/min

CHASSIS

Suspension/Front: Independent double swing arm
Suspension/Rear: Single swing arm
Brakes/Front: Drum
Brakes/Rear: Ventilated Hydraulic disc
Tires/Front: 21X7-8 radial
Tires/Rear: 20X9.5-8 radial

DIMENSIONS

Overall Size (L*W*H) 1700*1040*1110mm
Seat Height: 810mm
Wheelbase: 1120mm
Ground Clearance: 120mm
Battery: 12V9Ah
Fuel Capacity: 5L
Dry Weight: 170kg
Max. Load: 150kg
Package Size: 1580×900×800mm
Loading Quantity: 21pcs/20' GP, 42pcs/40' HQ

MAIN PERFORMANCE

Max. Speed: 75km/h
Fuel Consumption: 4.0L/100km
Starting Time: ≤15s
Brake Distance: 30km/hs7m

Specification

ENGINE

Type: 175cc, Air cooled, 4-stroke, 1-cylinder
Bore×Stroke: 61×57.8mm
Compression Ratio: 9.2:1
Carburetor: PZ24J
Ignition: CDI
Starting: Electrical start
Transmission: F-N-R
Drive Train: Chain drive
Max. Power: 8.0kw/5500r/min
Max. Torque: 11.0N.m/5500r/min

CHASSIS

Suspension/Front: Dual double swing arm
Suspension/Rear: Dual double swing arm
Brakes/Front: Hydraulic disc
Brakes/Rear: Ventilated Hydraulic disc
Tires/Front: 21×7-8 radial
Tires/Rear: 20.5×10-10 radial

DIMENSIONS

Overall Size (L*W*H) 2400*1220*1500mm
Seat Height: 520mm
Wheelbase: 2300mm
Ground Clearance: 120mm
Battery: 12V9Ah
Fuel Capacity: 10.0L
Dry Weight: 245kg
Max. Load: 160kg
Package Size: 2280×1290×840mm
Loading Quantity: 8pcs/20' GP, 27pcs/40' HQ

MAIN PERFORMANCE

Max. Speed: 60km/h
Fuel Consumption: 5.0L/100km
Starting Time: ≤15s
Brake Distance: 30km/hs7m
Climb ability: ≤20°

■ ATU175-A



BUGGY
series

www.taotao-motor.com

WHEEL THE WORLD

ATK 300-A
TAD TAO BUGGY



Specification

ENGINE

Type: 300cc, Water cooled, 4-stroke, 1-cylinder
Bore×Stroke: $\phi 78 \times 61.2$ mm
Compression Ratio: 10.0:1
Carburetor: PD30
Ignition: CDI
Starting: Electrical start
Transmission: F-N-R
Drive Train: Chain drive
Max. Power: 14.0Kw/7000r/min
Max. Torque: 23.0N.m/5500r/min

CHASSIS

Suspension/Front: Dual double swing arm
Suspension/Rear: Single swing arm
Brakes/Front: Hydraulic disc
Brakes/Rear: Ventilated Hydraulic disc
Tires/Front: 21×7-10 radial
Tires/Rear: 21×11-10 radial

DIMENSIONS

Overall Size (L×W×H) 3280×1720×1680mm
Seat Height: 480mm
Wheelbase: 2720mm
Ground Clearance: 160mm
Battery: 12V14Ah
Fuel Capacity: 12L
Dry Weight: 405kg
Max. Load: 300kg
Package Size: 3310×1420×780mm
Loading Quantity: 8pcs/20' GP, 27pcs/40' HQ

MAIN PERFORMANCE

Max. Speed: 75km/h
Fuel Consumption: 6.0L/100km
Starting Time: ≤15s
Brake Distance: 30km/h≤7m
Climb ability: ≤30°

ATK300-A



BUGGY
series

www.tadtaomotor.com

WHEEL THE WORLD

ATK175-E
TAD TAO BUGGY



Specification

ENGINE

Type: 175cc, Air cooled, 4-stroke, 1-cylinder
Bore×Stroke: $\phi 61 \times 57.8$ mm
Compression Ratio: 9.2:1
Carburetor: PZ24J
Ignition: CDI
Starting: Electrical start
Transmission: F-N-R
Drive Train: Chain drive
Max. Power: 8.0kW/5500r/min
Max. Torque: 11.0N.m/5500r/min

CHASSIS

Suspension/Front: Dual double swing arm
Suspension/Rear: Single swing arm
Brakes/Front: Hydraulic disc
Brakes/Rear: Ventilated Hydraulic disc
Tires/Front: 21×7-10 radial
Tires/Rear: 22×11-10 radial

DIMENSIONS

Overall Size (L×W×H): 2685×1490×1210mm
Seat Height: 420mm
Wheelbase: 1861mm
Ground Clearance: 150mm
Battery: 12V9Ah
Fuel Capacity: 6.0L
Dry Weight: 270kg
Max. Load: 160kg
Package Size: 2280×1300×610mm
Loading Quantity: 12pcs/20' GP, 36pcs/40' HQ

MAIN PERFORMANCE

Max. Speed: 60km/h
Fuel Consumption: 5.0L/100km
Starting Time: ≤15s
Brake Distance: 30km/h≤7m
Climb ability: ≤20°

■ ATK175-E



Yellow Blue Red



BUGGY
series

www.tadtaomotor.com

WHEEL THE WORLD



■ ATK110-A



■ Yellow ■ Pink ■ Red ■ Green

Specification

ENGINE

Type: 107cc, Air cooled, 4-stroke, 1-cylinder
Bore×Stroke: $\phi 52.4 \times 49.5$ mm
Compression Ratio: 9.2:1
Carburetor: PZ20
Ignition: CDI
Starting: Electrical start
Transmission: F-N-R
Drive Train: Chain drive
Max. Power: 4.5kW/6000r/min
Max. Torque: 6.9N.m/6500r/min

CHASSIS

Suspension/Front: Dual double swing arm
Suspension/Rear: Dual double swing arm
Brakes/Front: Hydraulic disc
Brakes/Rear: Ventilated Hydraulic disc
Tires/Front: 16X8-7 radial
Tires/Rear: 16X8-7 radial

DIMENSIONS

Overall Size (L*W*H) 1660*1080*1125mm
Seat Height: 330mm
Wheelbase: 1365mm
Ground Clearance: 90mm
Battery: 12V5Ah
Fuel Capacity: 4.0L
Dry Weight: 120kg
Max. Load: 100kg
Package Size: 1650*750*500mm
Loading Quantity: 40pcs/20'GP, 105pcs/40'HQ

MAIN PERFORMANCE

Max. Speed: 50km/h
Starting Time: ≤ 15 s
Fuel Consumption: 2.5L/100km
Brake Distance: 30km/h ≤ 5.9 m
Climb ability: $\leq 20^\circ$

Specification

ENGINE

Type: 79cc, Air cooled, 4-stroke, 1-cylinder
Bore×Stroke: $\phi 52 \times 37.4$ mm
Compression Ratio: 8.5:1
Carburetor: PZ20
Ignition: Breakerless ignition system
Starting: Hand start
Transmission: Automatic
Drive Train: Shaft drive
Max. Power: 1.8kW/3600r/min
Max. Torque: 4.2N.m/3000r/min

CHASSIS

Suspension/Front: NO
Suspension/Rear: NO
Brakes/Front: NO
Brakes/Rear: Ventilated Hydraulic disc
Tires/Front: 13X5-6 radial
Tires/Rear: 13X5-6 radial

DIMENSIONS

Overall Size (L*W*H) 1350*800*930mm
Seat Height: 180mm
Wheelbase: 920mm
Ground Clearance: 60mm
Battery: 12V4Ah
Fuel Capacity: 1.3L
Dry Weight: 60kg
Max. Load: 50kg
Package Size: 1370*830*620mm
Loading Quantity: 33pcs/20'GP, 88pcs/40'HQ

MAIN PERFORMANCE

Max. Speed: 20km/h
Starting Time: ≤ 15 s
Fuel Consumption: 2.0L/100km
Brake Distance: 25km/h ≤ 5 m
Climb ability: $\leq 12^\circ$

■ ATK80-A



■ Black ■ Red



BUGGY
series

www.tootamotor.com

WHEEL THE WORLD



■ ATK175-D



■ Yellow ■ Blue ■ Red



Specification

ENGINE

Type: 175cc, Air cooled, 4-stroke, 1-cylinder
Bore×Stroke: $\phi 61 \times 57.8$ mm
Compression Ratio: 9.2:1
Carburetor: PZ24J
Ignition: CDI
Starting: Electrical start
Transmission: F-N-R
Drive Train: Chain drive
Max. Power: 8.0kW/5500r/min
Max. Torque: 11.0N.m/5500r/min

CHASSIS

Suspension/Front: Dual double swing arm
Suspension/Rear: Single swing arm
Brakes/Front: Hydraulic disc
Brakes/Rear: Ventilated Hydraulic disc
Tires/Front: 21×7-10 radial
Tires/Rear: 22×11-10 radial

DIMENSIONS

Overall Size (L*W*H) 2450*1510*1580mm
Seat Height: 420mm
Wheelbase: 1892mm
Ground Clearance: 150mm
Battery: 12V9Ah
Fuel Capacity: 4.5L
Dry Weight: 240kg
Max. Load: 160kg
Package Size: 2300×1300×660mm
Loading Quantity: 12pcs/20'GP, 36pcs/40'HQ

MAIN PERFORMANCE

Max. Speed: 60km/h
Fuel Consumption: 5.0L/100km
Starting Time: ≤15s
Brake Distance: 30km/h≤7m
Climb ability: ≤20°

Specification

ENGINE

Type: 175cc, Air cooled, 4-stroke, 1-cylinder
Bore×Stroke: $\phi 61 \times 57.8$ mm
Compression Ratio: 9.2:1
Carburetor: PZ24J
Ignition: CDI
Starting: Electrical start
Transmission: F-N-R
Drive Train: Chain drive
Max. Power: 8.0kW/5500r/min
Max. Torque: 11.0N.m/5500r/min

CHASSIS

Suspension/Front: Dual double swing arm
Suspension/Rear: Single swing arm
Brakes/Front: Hydraulic disc
Brakes/Rear: Ventilated Hydraulic disc
Tires/Front: 19×7-8 radial
Tires/Rear: 18×9.5-7 radial

DIMENSIONS

Overall Size (L*W*H) 2650*1360*1500mm
Seat Height: 400mm
Wheelbase: 2150mm
Ground Clearance: 150mm
Battery: 12V9Ah
Fuel Capacity: 4.5L
Dry Weight: 215kg
Max. Load: 160kg
Package Size: 2500×1160×600mm
Loading Quantity: 12pcs/20'GP, 32pcs/40'HQ

MAIN PERFORMANCE

Max. Speed: 60km/h
Fuel Consumption: 5.0L/100km
Starting Time: ≤15s
Brake Distance: 30km/h≤7m
Climb ability: ≤20°

■ ATK175-A2



BUGGY
series

www.taoataomotor.com

WHEEL THE WORLD

■ ATK125-A



Yellow Blue Red

Specification

ENGINE

Type: 124cc, Air cooled, 4-stroke, 1-cylinder
Bore×Stroke: $\phi 53.2 \times 49.5$ mm
Compression Ratio: 9.5:1
Carburetor: PZ20
Ignition: CDI
Starting: Electrical start
Transmission: F-N-R
Drive Train: Chain drive
Max. Power: 5.0kW/8000r/min
Max. Torque: 7.0Nm/6500r/min

CHASSIS

Suspension/Front: Dual double swing arm
Suspension/Rear: Single swing arm
Brakes/Front: Hydraulic disc
Brakes/Rear: Ventilated Hydraulic disc
Tires/Front: 16X8-7 radial
Tires/Rear: 16X8-7 radial

DIMENSIONS

Overall Size (L*W*H) 1900*1250*1300mm
Seat Height: 300mm
Wheelbase: 1400mm
Ground Clearance: 130mm
Battery: 12V4Ah
Fuel Capacity: 3.5L
Dry Weight: 110kg
Max. Load: 100kg
Package Size: 1690×1150×590mm
Loading Quantity: 18pcs/20'GP, 56pcs/40'HQ

MAIN PERFORMANCE

Max. Speed: 55km/h
Starting Time: ≤ 15 s
Fuel Consumption: 3.0L/100km
Brake Distance: 30km/hs7m
Climb ability: $\leq 20^\circ$

Specification

ENGINE

Type: 110cc, Air cooled, 4-stroke, 1-cylinder
Bore×Stroke: $\phi 52.4 \times 49.5$ mm
Compression Ratio: 8.0:1
Carburetor: PZ19
Ignition: CDI
Starting: Kick start
Transmission: Automatic
Drive Train: Chain drive
Max. Power: 5.5kW/8000r/min
Max. Torque: 8.0Nm/6000r/min

CHASSIS

Suspension/Front: Double shock absorber
Suspension/Rear: Oil damper
Brakes/Front: Hydraulic disc
Brakes/Rear: Drum
Tires/Front: 2.75-10
Tires/Rear: 2.75-10

DIMENSIONS

Overall Size (L*W*H) 1350*630*855mm
Seat Height: 650mm
Wheelbase: 935mm
Ground Clearance: 170mm
Battery: 12V4Ah
Fuel Capacity: 4.0L
Dry Weight: 54kg
Max. Load: 70kg
Package Size: 1155×355×630mm
Loading Quantity: 96pcs/20'GP, 264pcs/40'HQ

MAIN PERFORMANCE

Max. Speed: 50km/h
Fuel Consumption: 2.0L/100km
Starting Time: ≤ 15 s
Brake Distance: 30km/hs5.9m

■ DB10



**DIRT
BIKE**
series
www.tao-tao-motor.com

WHEEL THE WORLD

DB14



Specification

ENGINE

Type: 110cc, Air cooled, 4-stroke, 1-cylinder
Bore×Stroke: $\phi 52.4 \times 49.5$ mm
Compression Ratio: 8.0:1
Carburetor: PZ19
Ignition: CDI
Starting: Kick start
Transmission: 4-3-2-N-1
Drive Train: Chain drive
Max. Power: 5.5Kw/6000r/min
Max. Torque: 8.0N.m/6000r/min

CHASSIS

Suspension/Front: Double shock absorber
Suspension/Rear: Oil damper
Brakes/Front: Hydraulic disc
Brakes/Rear: Hydraulic disc
Tires/Front: 2.50-14
Tires/Rear: 3.00-12

DIMENSIONS

Overall Size (L*W*H) 1590*700*1040mm
Seat Height: 710mm
Wheelbase: 1115mm
Ground Clearance: 290mm
Battery: 12V4Ah
Fuel Capacity: 4.0L
Dry Weight: 57kg
Max. Load: 70kg
Package Size: 1370×360×780mm
Loading Quantity: 75pcs/20' GP, 150pcs/40' HQ

MAIN PERFORMANCE

Max. Speed: 50km/h
Fuel Consumption: 2.0L/100km
Starting Time: ≤ 15 s
Brake Distance: 30km/h ≤ 5.9 m

Specification

ENGINE

Type: 125cc, Air cooled, 4-stroke, 1-cylinder
Bore×Stroke: $\phi 54 \times 54$ mm
Compression Ratio: 9.0:1
Carburetor: PZ26
Ignition: CDI
Starting: Kick start
Transmission: 4-3-2-N-1
Drive Train: Chain drive
Max. Power: 6.5Kw/8000r/min
Max. Torque: 9.0N.m/6500r/min

CHASSIS

Suspension/Front: Double shock absorber
Suspension/Rear: Oil damper
Brakes/Front: Hydraulic disc
Brakes/Rear: Hydraulic disc
Tires/Front: 70/100-17
Tires/Rear: 90/100-14

DIMENSIONS

Overall Size (L*W*H) 1770*765*1090mm
Seat Height: 780mm
Wheelbase: 1250mm
Ground Clearance: 330mm
Battery: 12V4Ah
Fuel Capacity: 5.5L
Dry Weight: 70kg
Max. Load: 90kg
Package Size: 1580×385×810mm
Loading Quantity: 40pcs/20' GP, 132pcs/40' HQ

MAIN PERFORMANCE

Max. Speed: 50km/h
Fuel Consumption: 2.0L/100km
Starting Time: ≤ 15 s
Brake Distance: 30km/h ≤ 5.9 m

DB17



**DIRT
BIKE**
series

www.taotamotor.com

WHEEL THE WORLD

SNOW FOX II

EASY TAKE EASY GO!



Specification

Engine type GY6 149.6cc
Max power/RPM(kw/r/min) 6.3/7000
Max torque/RPM(N.m/r/min) 8.3/6000
Fuel consumption 5L/100km
Tank capacity 4.5L
Culth Automatic
Supply sustem Carburetor
Brake control(rear) Hand control
Way of drive Chain and rubber track drive
Start type Electrical and handle start
Max speed 45-50km/h
Overall size (L*H*W) 2500*950*1140mm
Dry weight 170kg
Load,Max 150kg
Brake system (rear) Disc brake
Climb ability 25°-30°
Caterpillar band overall length 2150mm
Caterpillar band width 380mm
Press snow depth 5-8cm
Press snow length 880mm
Skid L*W 920*135mm
40HQ capacity 83 units

Engine type GY6 200cc
Max power/RPM(kw/r/min) 7.6/7000
Max torque/RPM(N.m/r/min) 10.2/5000
Fuel consumption 5.5L/100km
Tank capacity 4.5L
Culth Automatic
Supply sustem Carburetor
Brake control(rear) Hand control
Way of drive Chain and rubber track drive
Start type Electrical and handle start
Max speed 45-50km/h
Overall size (L*H*W) 2500*950*1140mm
Dry weight 170kg
Load,Max 170kg
Brake system (rear) Disc brake
Climb ability 30°-35°
Caterpillar band overall length 2400mm
Caterpillar band width 310mm
Press snow depth 5-8cm
Press snow length 880mm
Skid L*W 920*135mm
40HQ capacity 83 units

TTXD200-C

Displacement 200 cc

TTXD150-C

Displacement 150 cc



SNOW
MOBILE
series

www.taotao-motor.com

WHEEL THE WORLD



SNOW FOX

EASY TAKE EASY GO!



Specification

Engine type GY6 170cc
Max power/RPM(kw/r/min) 7.6/7000
Max torque/RPM(N.m/r/min) 10.2/5000
Fuel consumption 5.5L/100km
Tank capacity 4.5L
Culth Automatic
Supply sustem Carburetor
Brake control(rear) Hand control
Way of drive Chain and rubber track drive
Start type Electrical and handle start
Max speed 45-50km/h

Overall size (L*H*W) 2500*950*1150mm
Dry weight 130kg
Load, Max 150kg
Brake system (rear) Disc brake
Climb ability 30°-35°
Caterpillar band overall length 2150mm
Caterpillar band width 380mm
Press snow depth 5-8cm
Press snow length 380mm
Skid L*W 920*150mm
40HQ capacity 83 units

■ TTXD200-B

Displacement 200 cc

■ TTXD150-B

Displacement 150 cc



SNOW
MOBILE
series

www.tatyaomotor.com

WHEEL THE WORLD



Handle/Electric double Start System

Electric Start, when the temperature above -20°C,
Electric way will be the first choice of starting, however
when weather declining to under -20°C, handle system
can ensure you to start snowmobile easily.

SNOW MAX

TAO TAO SNOWMOBILE



Specification

Overall length (I): 2400mm
Overall length (II): 980mm
The width of handlebar work centre (B2): 650mm
N.W (kg): 150
With packing frame and carton (G.W): 155
Engine type: GY6
Max power/RPM (kw/r/min): 6.3/7000
Fuel consumption: 5L/100km
Ignition type: CDI
Culth: Automatic
Carburator: PD24
Brake system (rear): disk brake
Max speed (km/h): 45-50
40HQ capacity: 54units
Centerpillar band width: 310mm
Skid L*W (mm): 920*135

overall width (B): 980mm
seat height (II): 650mm
handle corner (a): 40°
Load, Max: 150kg
Climb ability
displacement (ml): 149cc
Max torque/RPM (N.m/r/min): 9.3/6000
transmission type: Chain and rubber track drive
start type: electrical
shift way (front, air, reverse): hand shift
tank capacity: 5L
brake control (rear): hand control
battery: 7All
caterpillar band overall length: 2100mm
caterpillar band drive square: 0.35m²
skid cover square: 0.1m²

TTXD200-A

Displacement 200 cc

TTXD150-A

Displacement 150 cc



SNOW
MOBILE
series

www.taotao-motor.com

WHEEL THE WORLD

